

Seamark Hongkong Limited

Address : Building 10/11, Longwangmiao Industrial Zone, Baishixia Community, Fuyong, Bao'an, Shenzhen, China

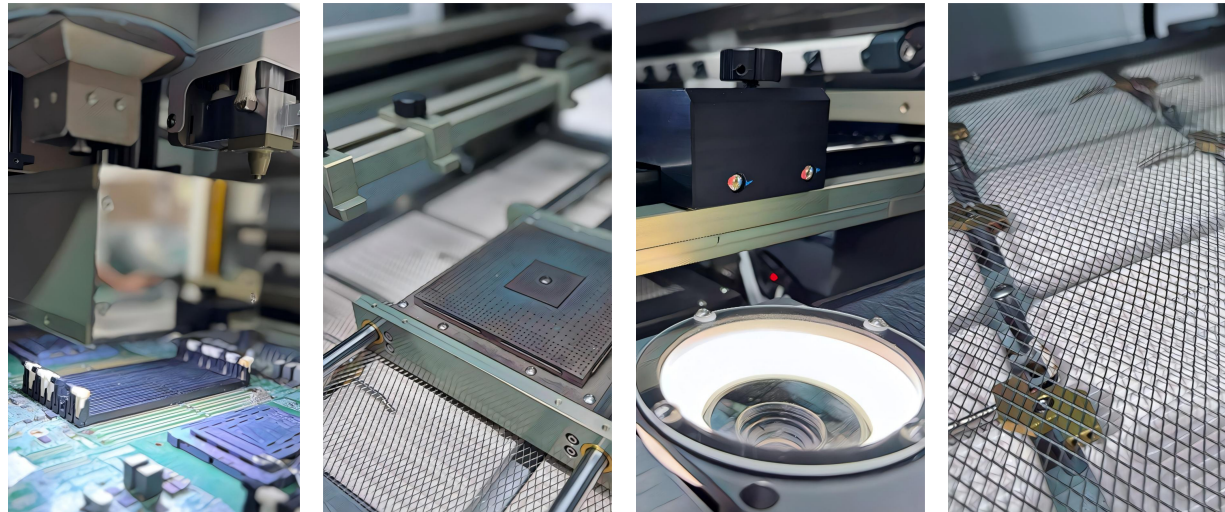
Cell Phone : 0086 156 0298 9546

Email : wfm75@163.com info@seamarksm.com



R9100 - Rework System

Automatic Desoldering - Dipping



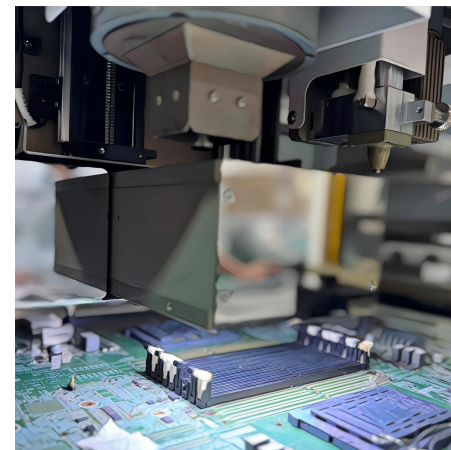
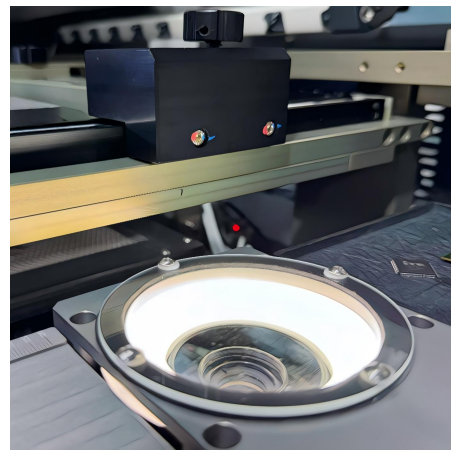
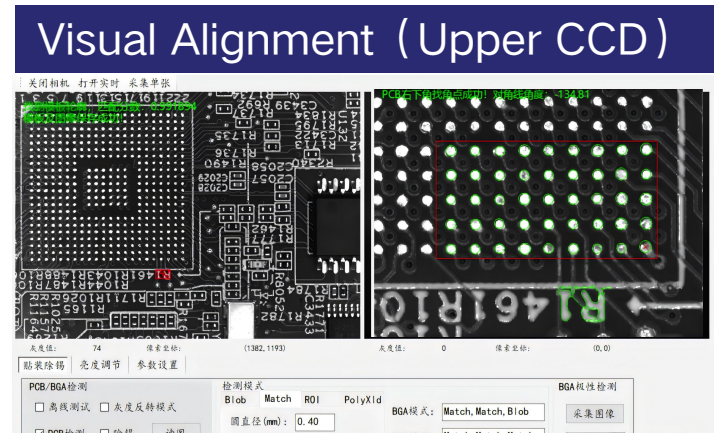
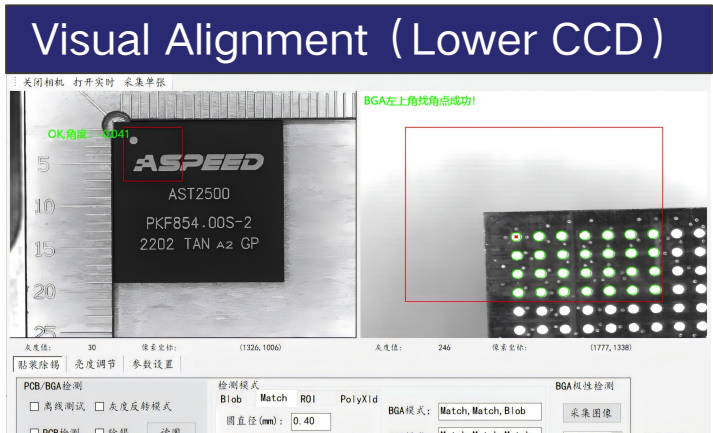
YouTube | R9100 Reworking System

Brief (1'39''): <https://www.youtube.com/watch?v=O1Di-gBB20Y>

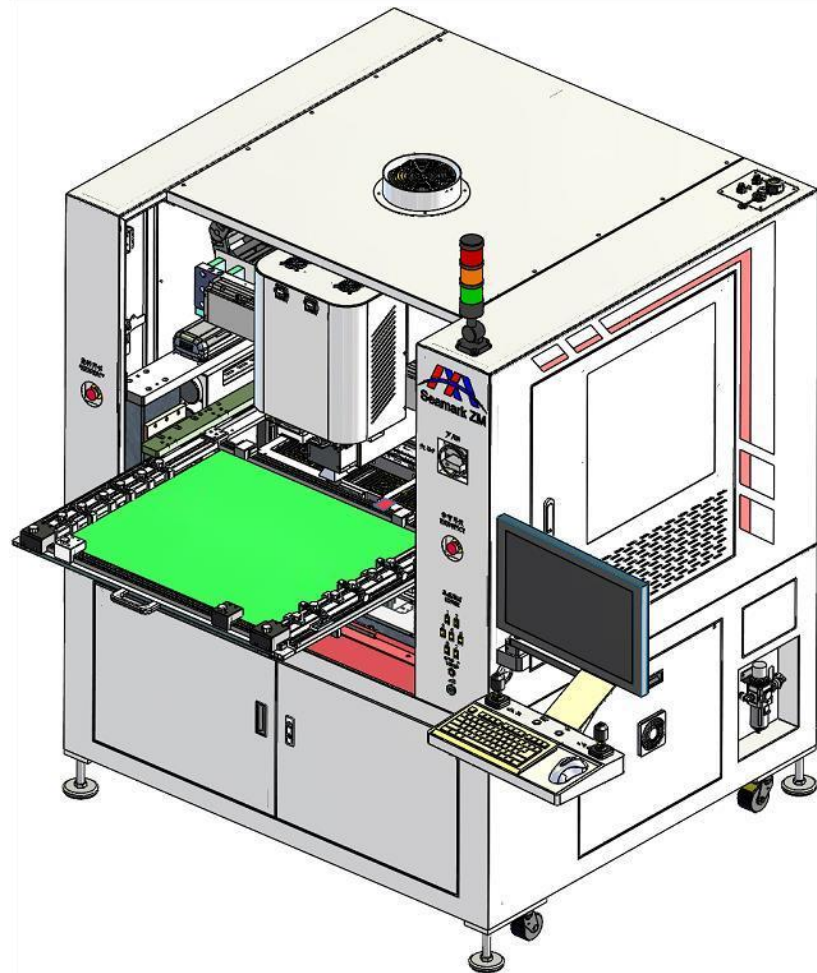
- I. Non-contact Desoldering
- II. Vision CCD System
- III. One-click Rework
- IV. Safety and Reliability
- V. Multifunctional Features

Auto-Mounting

Auto-Soldering



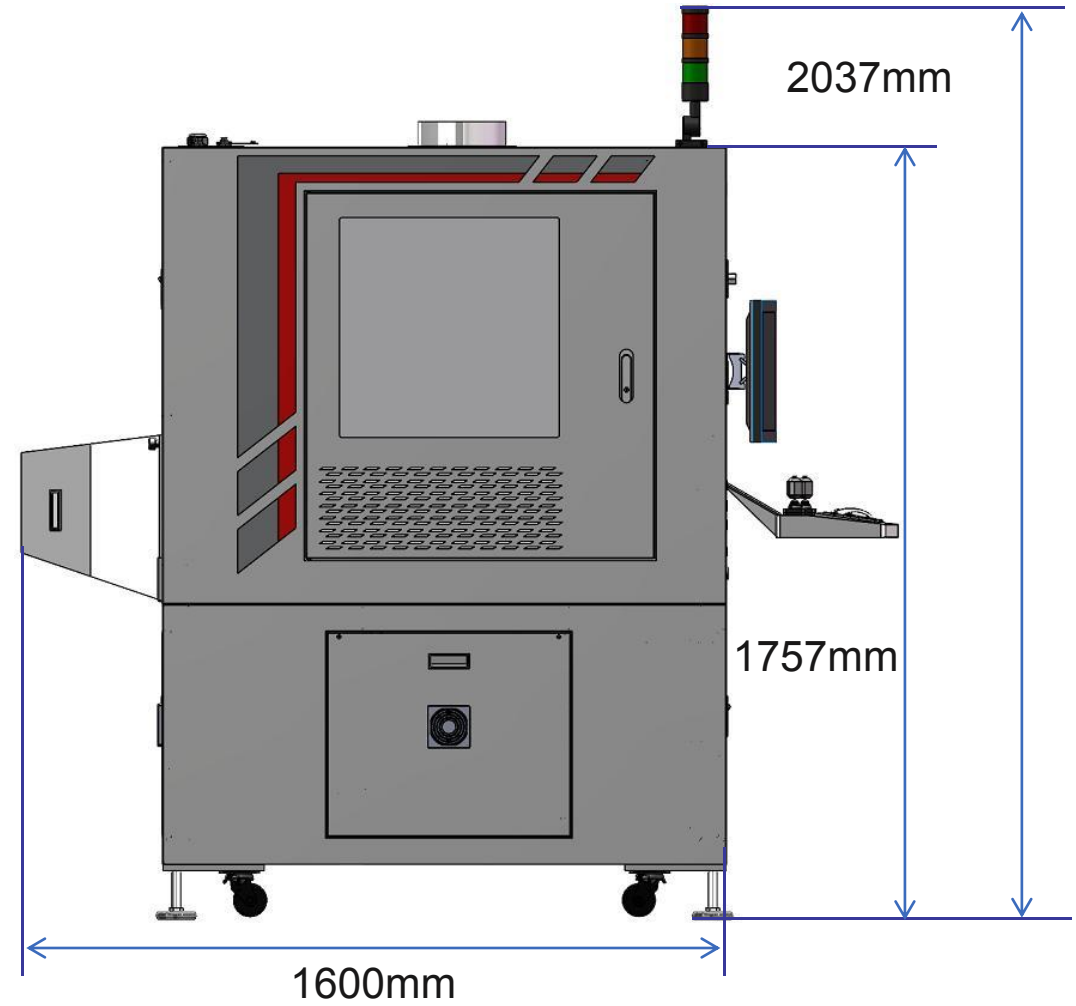
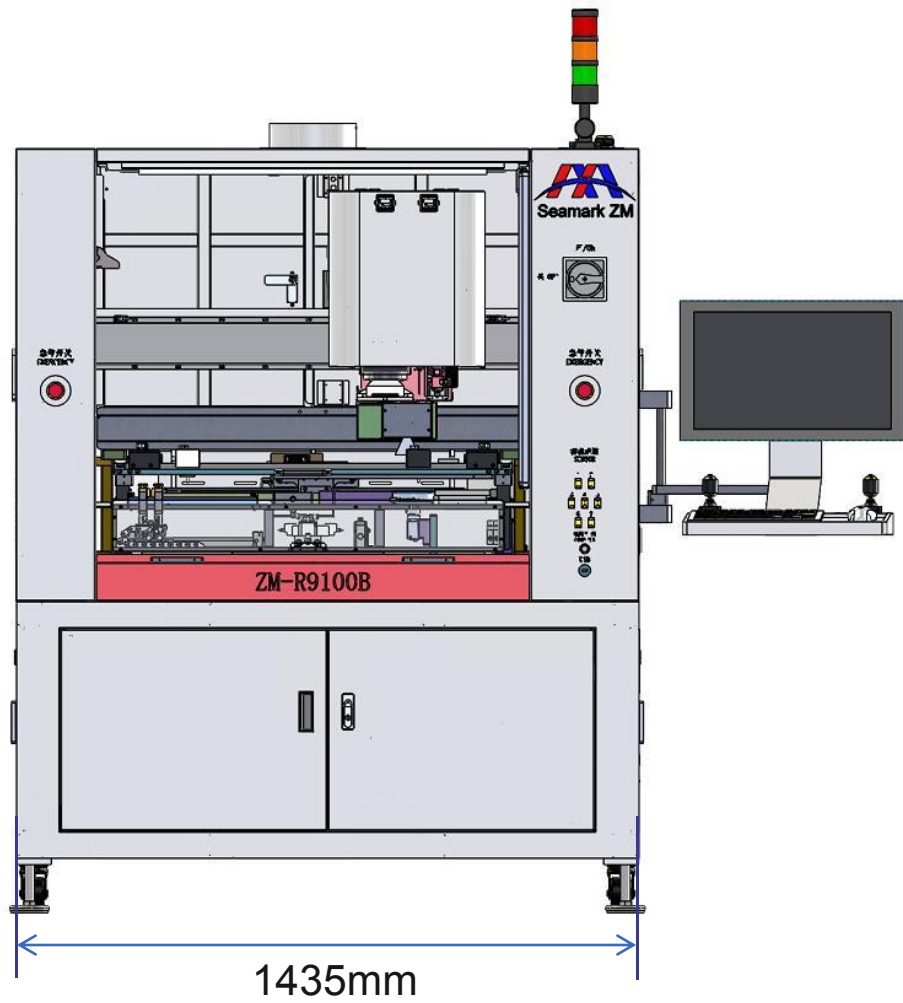
- ## R9100 | Rework System
- I. High-precision 2 vision CCD system.
 - II. 4 independent preheating platforms.
 - III. Fully auto-dipping and mounting.



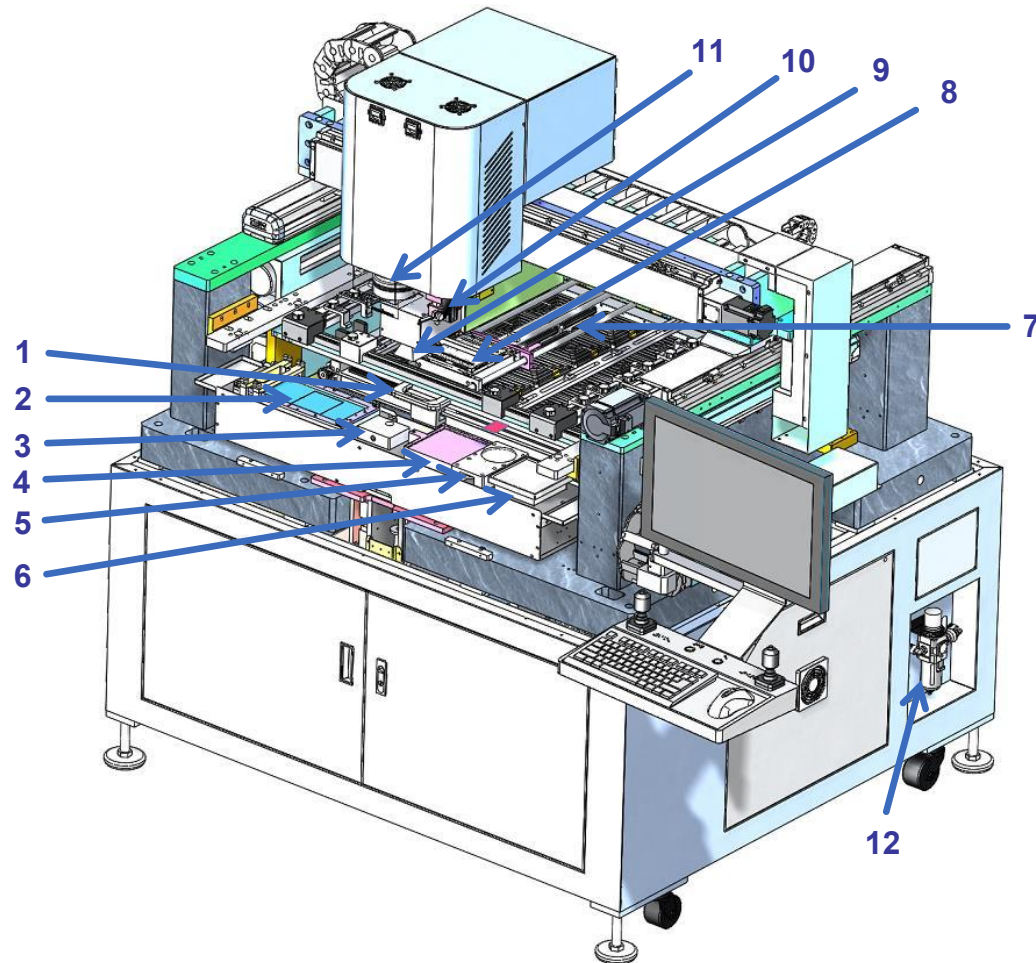
Extractable multifunctional board clamp. It's convenient for loading and unloading large-sized PCBs and boards with fixtures. It supports clamping various types of PCBs.

Seamark | R9100 Specification

Power Supply	AC 380V \pm 10%	50/60Hz
PCB Size	700×560mm (Max)	10×10 mm (Min)
BGA Chip Size	120×120mm (Max)	1×1 mm (Min)
IR Zone Size	695×590mm	
Weight	1300KG	
Dimension	L1435×W1600×H1757mm (as follows)	



R9100 - Rework System



Seamark | Rework Solution

1	PCB clamping tray	2	Dipping device
3	Tin slag collection	4	Feeding Device
5	Lower camera	6	Receiving tray
7	IR preheating zone	8	Moving temp. zone
9	Upper camera	10	Tin removal device
11	Upper heater	12	Air intake switch

R9100 - Heating System

Infrared preheating zone

Bottom heater

- I. IR preheating zone adopts German imported heating bricks with built - in temp. probe for closed-loop control.
- II. Moveable bottom heater adopts hot-air heating with changeable nozzles , supporting different components.
- III. Both IR & Bottom heater are equipped with a **lifting Z-axis** , adapting to products with different thicknesses.

R9100 - X / Y / Z

3-axis Gantry Assembly

- I. The industrial PC+servo motion control system, achieving precise motion control.

- II. X/Y/Z **three-axis gantry structure** operates independently in full-automation, with **marble platform**, moving accuracy up to $\pm 0.01\text{mm}$.

THE ZM - R9100 - Feeding System

